

OLE Health has remained open to serve our patients throughout 2020 and we continue to be here for our **COMMUNITY** with telehealth and in-person visits. **Hablamos español.**

707-254-1770 olehealth.org

OLE HEALTH
Live Life Well a californiakaiser center

Napa Valley Register

Happy howlidays

Napa County's most-loved pets, **FACES & PLACE, C1**



The year in space

2020 achievements a bright spot **NEWS, A6**

Notes and Quotes

Shelton new PUC soccer coach **SPORTS, B1**

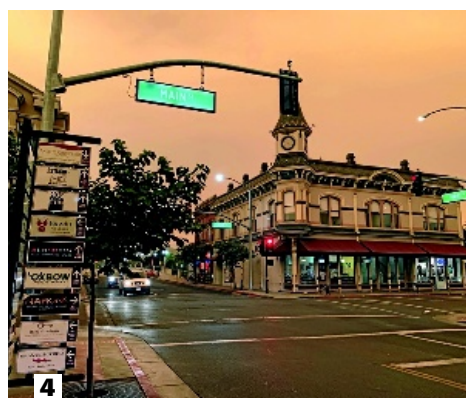
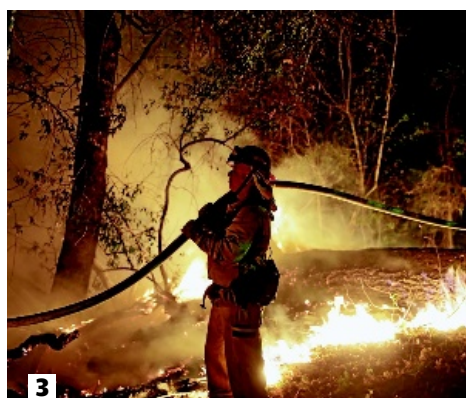


MOSTLY SUNNY 60 • 32 FORECAST, D4

SUNDAY, DECEMBER 20, 2020

napavalleyregister.com

\$2



Napa County faces BURNING PROBLEM

BARRY EBERLING
beberling@napanews.com Edit

Christopher Thompson exited his Deer Park house at 3:50 a.m. on Sept. 27 and saw a fiery scene he had long imagined with dread — and had hoped to help prevent.

“When I stepped out of my house on the porch and saw those flames leaping from Bell Canyon reservoir (area), I knew my worst nightmare had come to fruition,” Thompson said.

The Deer Park firefighter and president of Napa Communities Firewise Foundation had worked unsuccessfully to obtain a \$750,000 grant from Cal Fire for fuel management in Bell Canyon. He’d wanted to thin out vegetation and improve legacy roads there.

Now the Glass Fire raged. Thompson’s fire pager had alerted him.

He won’t say the Bell Canyon work he’d sought would have stopped the wind-

Part 1 of 4

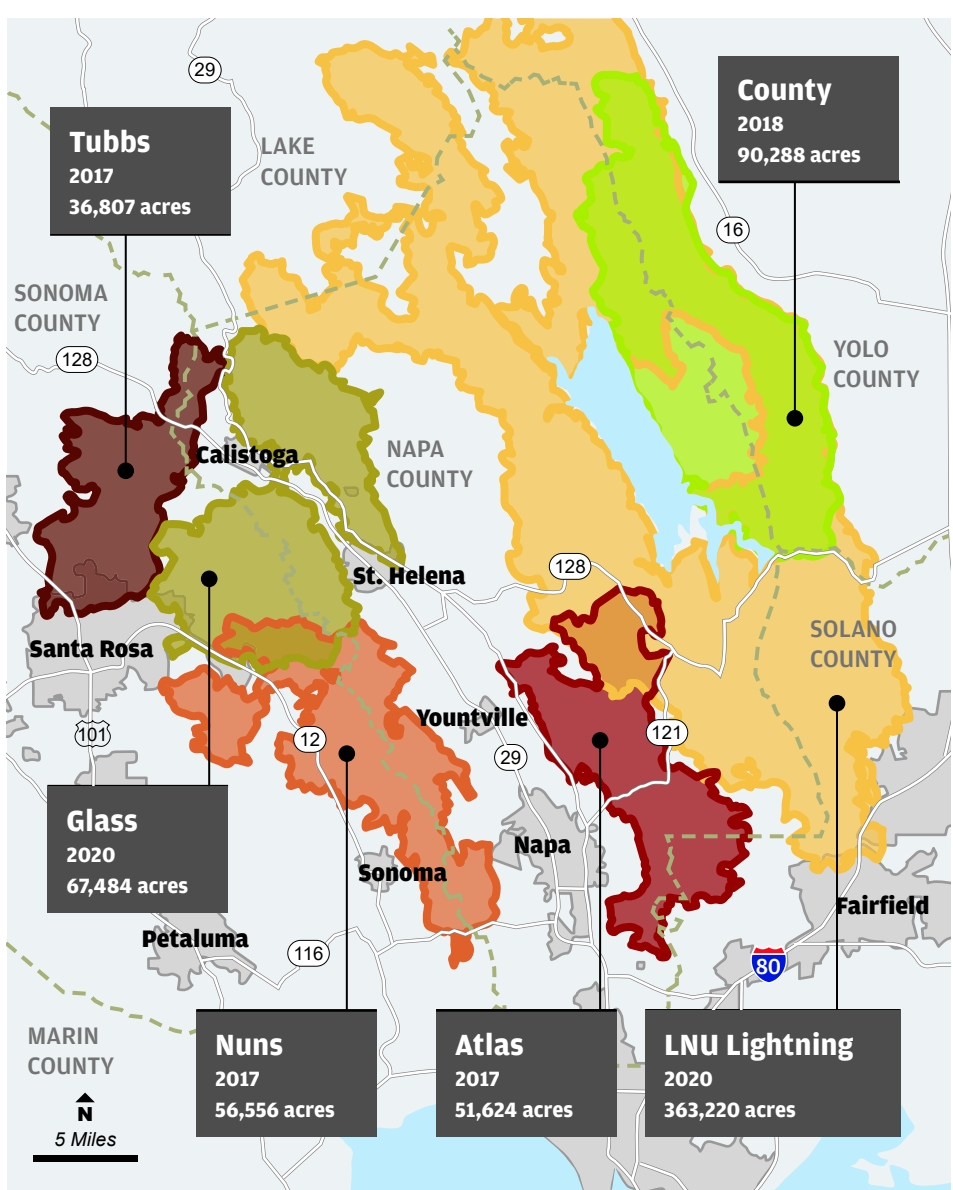
This is the first of a four-part series. **NEXT SUNDAY:** the wine industry faces the fires.

driven Glass Fire that fateful night. But it would have helped firefighters make a stronger stand, he said. It’s a “what if” he doesn’t want to see repeated.

Never again — that’s the growing cry after the disastrous 2020 and 2017 fire seasons saw half of Napa County burn and more than 1,500 homes and businesses destroyed. Thompson’s is among the loudest voices.

“I’ve been telling everybody this is an existential crossroads we’re at in the county,” Thompson said recently. “We need to start making some big decisions.”

Please see **FIRE**, Page A6



SOURCE: Cal Fire; Napa County Emergency Operations Center

Lee Digital Content Center



PHOTOS BY HOWARD YUNE, NOAH BERGER, JENNIFER HUFFMAN, MARCIO JOSE SANCHEZ, J.L. SOUSA

TOP: 1. Glass Mountain Inn, Sept. 27, in St. Helena, Calif. 2. Vineyards along Highway 29 in Oakville. 3. Spanish Flat, Aug. 18, in unincorporated Napa County. 4. Downtown Napa, Sept. 9. **BOTTOM:** 5. Oct. 14, 2017 in Santa Rosa, Calif. 6. July 1, 2018 in Guinda, Calif. 7. Silverado Country Club after the Atlas Fire. 8. Cache Creek Casino Resort, July 1, 2018, in Capay, Calif.

REBUILDING

Meadowood prepares for Glass Fire comeback

BARRY EBERLING
beberling@napanews.com

Napa County’s luxurious Meadowood Napa Valley resort is preparing for its rebirth following the devastation of the Glass Fire that caused an estimated \$100 million worth of damage there.

The southern part of the resort tucked into the hills east of St.

Helena was largely undamaged by the fire. Meadowood has announced it hopes to reopen the cottages, pool, tennis courts and other amenities in that area after March 31.

But the northern section is another story. Among other things, the Glass Fire reduced to rubble the clubhouse that was home to

a three-star Michelin restaurant and destroyed more than 50 rooms.

“We look forward to working with the county and you in partnership to rebuild even better and brighter than before,” Resort Managing Director David Pearson told the Napa County Board of Supervisors last week.

Supervisors directed staff to negotiate possible terms of a development agreement between the county and Meadowood Resort LLC to hasten the rebuilding. They also instructed staff to work with Meadowood on the temporary accommodation of facilities lost to the fire.

In a letter to the county, Pear-

son said the fire caused more than \$100 million in property damage. The resort this year laid off 500 employees between the COVID-19 pandemic and the closure after this year’s wildfires.

“Meadowood will not be able to rehire these employees until it can

Please see **MEADOWOOD**, Page A6

OBITUARIES | PAGE D2

■ Shirley Davenport-Havens, Paige Wilson Dearden, Judge D. Mayer, Emily Eileen (Carvalho) Sparks

BETTY RHODES C2
HISTORY C4
CROSSWORD C4

HOROSCOPE C4
NATION & WORLD D1
OPINION D3

SCOREBOARD B3
SPORTS B1
WEEK IN REVIEW D4

